

## NH fuse switch-disconnector size 00, 160 A, panel mounting (33 328)



### Description

#### Article

Part No.: 33 328

QUADRON® Panel

NH fuse switch-disconnector size 00, 160 A, panel mounting

connection cleat 70 mm<sup>2</sup>

with electronic fuse monitoring

#### System

Mounting plate

Product group 09

Subgroup 04

pack size 1

EAN 4021267333287

#### Advantages of the product

self-closing inspection holes are available in the cover, shock protection split into 2 for safe connection

eCl@ss 6.1 27142108  
eCl@ss 7.1 27142108  
ETIM 4.0 EC001040  
ETIM 5.0 EC001040

## Approvals

### Standards

IEC 60947-1:2007 + A1:2010 + A2:2014  
IEC 60947-3:2008 + A1:2012

### Approvals

IEC (CB), UL, CCC



for UL feeder circuits >250V

Type number: LTS-00

UL file: E230163, UL category (for USA): IZLT2 <http://www.ul.com>  
CCC certificate: 2004010302117250

## Product data

### Electrical data

Rated current (IEC): 160 A  
Rated voltage (IEC) AC: 690 V  
Rated voltage (IEC) DC: 250 V

Rated current (UL): 160 A  
Rated voltage (UL) AC: 600 V

Utilisation category AC (IEC 60947-3): AC-23B (400 V),  
AC-22B (500 V),  
AC-21B (500 V)

Power dissipation:

The power dissipation at a typical load of 80% of the rated current results to 4.5 W.

(The power dissipation for operation with rated current would be 7 W.)

rated isolation voltage  $U_i$  (AC): 800

V

Rated surge voltage  $U_{imp}$ : 2 kV

max. permitted voltage (IEC) AC: 690

V

max. permitted voltage (IEC) DC: 250

V

cond. rated short-circuit current with fuses: 50 kA / 690V

approved with fuse links of characteristics: gG

SCCR: 100 kA

for fuse links IEC 60269-2-1 (I) / DIN VDE 0636-201 size 00 up to 12W power dissipation, with grip lugs under voltage

Entsprechend den angegebenen AC- und DC- Schalteigenschaften und unter Berücksichtigung der Überlastbedingungen, sind gewisse Abstände zu geerdeten Metallteilen einzuhalten. Nähere Informationen auf Anfrage.

Bei Verwendung als Trennschalter ist die Einhaltung der Abstände nicht erforderlich.

Schutzart IP30 frontseitig, im Anschlussbereich vom Einbau abhängig

Elektronische Sicherungsüberwachung:

- Zur Erkennung von Sicherungsausfällen mit Bemessungsspannung AC 100V bis AC 690V

- Keine Hilfsenergie erforderlich; Versorgung über Netzspannung

- Hilfskontakte potentialfrei

- LED- Blinkmelder (rot/grün)

- Testtaster

- Weitere Informationen unter Downloads / Datenblatt

### **Mechanical data**

W x H x D: 106 x 176 x 123

Weight: 93 kg/100

Poles: 3-pole

front degree of protection: IP30

### Terminal points

clamp-type terminals :

1,5 - 70 mm<sup>2</sup>

flexible cables with wire-end ferrule,

stranded round cables,

la. Cu max. 12 mm wide, max. 10 mm thick

Md 3 Nm

(flexible cables of maximum cross-section may not fit when using wire-end ferrule)

Accessory:

Screwed connection: M8 / 70mm<sup>2</sup>; 12 - 14Nm torque

Single prism clamp: Cu, Al\* 16-70mm<sup>2</sup> s(r), s(s), f+AE; 3Nm torque

tunnel terminal 3x Cu 1.5-16mm<sup>2</sup> s(r), f+AE; 3Nm torque

\*Connections not maintenance-free if aluminium conductors are used.

### Material properties

Main body: temperature stability 125°C,  
self-extinguishing in acc. to UL 94,  
creepage resistance CTI 600,  
halogen-free

Shock protection cover: temperature stability 125°C,  
self-extinguishing in acc. to UL 94,  
creepage resistance CTI 200

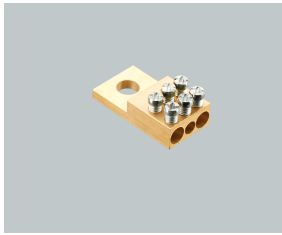
Handle: temperature stability 125°C,  
self-extinguishing in acc. to UL 94,  
creepage resistance CTI 200,  
halogen-free

Contacts: spring-loaded copper contacts, silver plated

### Version

Variant without electromechanical fuse monitoring: 33 207 Variant without fuse monitoring: 33 199

## Accessories



**01 182**

tunnel terminal

1 x 2,5 - 16mm<sup>2</sup> + 2 x 2,5 - 25mm<sup>2</sup>

NH 00



**03 849**

lid interlock

for sealing wire

Size 00

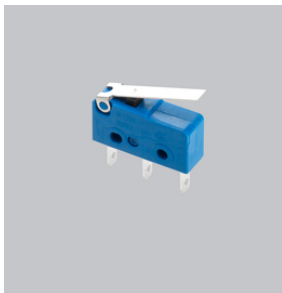


**30 894**

M8 screw connector

with spring washer

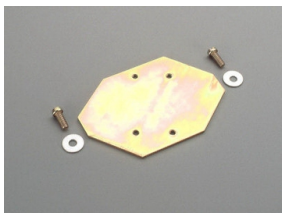
size 00



**33 156**

pilot switch

changeover 250 V AC / 5 A; 30 V DC / 4 A



**33 193**

rapid mounting set

for 2 DIN rails, rails centre distance 125 mm or 150 mm

size 00

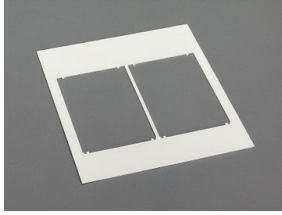


**33 224**

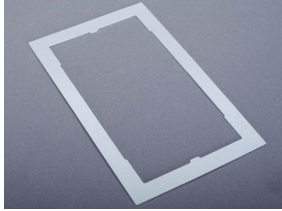
prism terminal, single, for Cu and Al cables

16 - 70 mm<sup>2</sup>

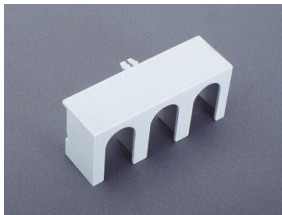
NH 00



**78 105**  
Trim frame, double  
232 x 210, not for 33221, 33222  
size 00



**78 893**  
Trim frame, single  
130 x 210, not for 33221, 33222  
size 00



**79 811**  
cover for cable lugs, attachable top/bottom  
for 33 200, 33 208, 33 329, 33 394, 33 398, 33 420  
NH 00